

# Sample Ballot

**Official Ballot**

**Onslow County, North Carolina**

**November 3, 2020**

**Page 1 of 2**

**Precinct SF18\_-B0020**

**BALLOT MARKING INSTRUCTIONS**

- A.** Using the marking device provided or a black or blue ink pen, completely fill in the box to the left of each candidate or selection of your choice as shown.
- B.** Where authorized, you may write in a candidate by filling in the box and writing the name on the Write-in line.
- C.** If you tear, deface or wrongly mark this ballot, return it to request a replacement.



**FEDERAL OFFICES**

**President and Vice President of the United States**  
(You may vote for ONE)

Donald J. Trump  
Michael R. Pence  
Republican

Joseph R. Biden  
Kamala D. Harris  
Democrat

Don Blankenship  
William Mohr  
Constitution

Howie Hawkins  
Angela Walker  
Green

Jo Jorgensen  
Jeremy (Spike) Cohen  
Libertarian

\_\_\_\_\_  
Write-in: \_\_\_\_\_

**US Senate**

(You may vote for ONE)

Thom Tillis  
Republican

Shannon W. Bray  
Libertarian

Cal Cunningham  
Democrat

Kevin E. Hayes  
Constitution

**US House of Representatives District 3**

(You may vote for ONE)

Daryl Farrow  
Democrat

Greg Murphy  
Republican

**STATE OFFICES**

**NC Governor**

(You may vote for ONE)

Al Pisano  
Constitution

Roy Cooper  
Democrat

Steven J. DiFiore  
Libertarian

Dan Forest  
Republican

**NC Lieutenant Governor**

(You may vote for ONE)

Mark Robinson  
Republican

Yvonne Lewis Holley  
Democrat

**NC Attorney General**

(You may vote for ONE)

Jim O'Neill  
Republican

Josh Stein  
Democrat

**NC Auditor**

(You may vote for ONE)

Anthony Wayne (Tony) Street  
Republican

Beth A. Wood  
Democrat

**NC Commissioner of Agriculture**

(You may vote for ONE)

Steve Troxler  
Republican

Jenna Wadsworth  
Democrat

**NC Commissioner of Insurance**

(You may vote for ONE)

Mike Causey  
Republican

Wayne Goodwin  
Democrat

**NC Commissioner of Labor**

(You may vote for ONE)

Josh Dobson  
Republican

Jessica Holmes  
Democrat

**NC Secretary of State**

(You may vote for ONE)

E.C. Sykes  
Republican

Elaine Marshall  
Democrat

**NC Superintendent of Public Instruction**

(You may vote for ONE)

Catherine Truitt  
Republican

Jen Mangrum  
Democrat

**NC Treasurer**

(You may vote for ONE)

Ronnie Chatterji  
Democrat

Dale R. Folwell  
Republican

**NC Supreme Court Chief Justice - Seat 1**

(You may vote for ONE)

Cheri Beasley  
Democrat

Paul Newby  
Republican

**NC Supreme Court**

**Associate Justice - Seat 2**

(You may vote for ONE)

Phil Berger, Jr.  
Republican

Lucy Inman  
Democrat

**NC Supreme Court**

**Associate Justice - Seat 4**

(You may vote for ONE)

Tamara Barringer  
Republican

Mark Davis  
Democrat

**NC Court of Appeals Judge**

**Seat 4**

(You may vote for ONE)

Tricia Shields  
Democrat

April C. Wood  
Republican

**NC Court of Appeals Judge**

**Seat 5**

(You may vote for ONE)

Lora Christine Cabbage  
Democrat

Fred Gore  
Republican

**NC Court of Appeals Judge**

**Seat 6**

(You may vote for ONE)

Gray Styers  
Democrat

Chris Dillon  
Republican

**NC Court of Appeals Judge**

**Seat 7**

(You may vote for ONE)

Reuben F. Young  
Democrat

Jeff Carpenter  
Republican

**NC Court of Appeals Judge**

**Seat 13**

(You may vote for ONE)

Chris Brook  
Democrat

Jefferson G. Griffin  
Republican

**NC State Senate**

**District 6**

(You may vote for ONE)

Ike Johnson  
Democrat

Michael A. Lazzara  
Republican

33

31081

**Read Both Sides of the Ballot**

# Sample Ballot

Official Ballot

Onslow County, North Carolina

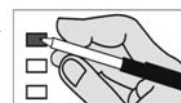
November 3, 2020

Page 2 of 2

Precinct SF18\_-B0020

### BALLOT MARKING INSTRUCTIONS

- A. Using the marking device provided or a black or blue ink pen, completely fill in the box to the left of each candidate or selection of your choice as shown.
- B. Where authorized, you may write in a candidate by filling in the box and writing the name on the Write-in line.
- C. If you tear, deface or wrongly mark this ballot, return it to request a replacement.



33  
31081

#### NC House of Representatives District 15

(You may vote for ONE)

Phillip Shepard  
Republican

Carolyn F. Gomaa  
Democrat

#### DISTRICT OFFICES

##### NC District Court Judge District 4 - Seat 3

(You may vote for ONE)

Christopher J. Welch  
Republican

##### NC District Court Judge District 4 - Seat 4

(You may vote for ONE)

Michael C. Surlles  
Republican

##### NC District Court Judge District 4 - Seat 5

(You may vote for ONE)

Robert H. Gilmore  
Republican

Carol Jones  
Democrat

##### NC District Court Judge District 4 - Seat 6

(You may vote for ONE)

James L. (Jim) Moore, Jr.  
Republican

##### NC District Court Judge District 4 - Seat 7

(You may vote for ONE)

William Shanahan  
Republican

##### NC District Court Judge District 4 - Seat 8

(You may vote for ONE)

Billy Sutton  
Republican

##### NC District Court Judge District 4 - Seat 9

(You may vote for ONE)

James Walter Bateman III  
Republican

#### COUNTY OFFICES

##### Board of Commissioners

(You may vote for FIVE)

Velvet Scoggin  
Democrat

Walter J. Scott  
Republican

Aleccia Sutton  
Democrat

Royce Bennett  
Republican

Jack Bright  
Republican

Paul Buchanan  
Republican

Patty Diaz  
Democrat

Robin L. Knapp  
Republican

##### Board of Education

(You may vote for FOUR)

Melissa Oakley  
Republican

Ken Reddic  
Republican

Joseph Speranza  
Republican

Earl Taylor  
Unaffiliated

Pam Thomas  
Unaffiliated

Eric Whitfield  
Republican

Paul L. Wiggins  
Unaffiliated

Takenya Kaprice LaBriado  
Democrat

##### Register of Deeds

(You may vote for ONE)

Omega King Jarman  
Republican

#### NONPARTISAN OFFICES

##### Soil and Water Conservation District Supervisor

(You may vote for ONE)

S. Jerome Shaw

Write-in:

END OF BALLOT

Read Both Sides of the Ballot