

# Sample Ballot

Official Ballot

Onslow County, North Carolina

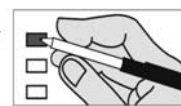
November 3, 2020

Page 1 of 2

Precinct FS16\_-B0006

### BALLOT MARKING INSTRUCTIONS

- A. Using the marking device provided or a black or blue ink pen, completely fill in the box to the left of each candidate or selection of your choice as shown.
- B. Where authorized, you may write in a candidate by filling in the box and writing the name on the Write-in line.
- C. If you tear, deface or wrongly mark this ballot, return it to request a replacement.



#### FEDERAL OFFICES

##### President and Vice President of the United States

(You may vote for ONE)

Donald J. Trump  
Michael R. Pence  
Republican

Joseph R. Biden  
Kamala D. Harris  
Democrat

Don Blankenship  
William Mohr  
Constitution

Howie Hawkins  
Angela Walker  
Green

Jo Jorgensen  
Jeremy (Spike) Cohen  
Libertarian

Write-in: \_\_\_\_\_

##### US Senate

(You may vote for ONE)

Thom Tillis  
Republican

Shannon W. Bray  
Libertarian

Cal Cunningham  
Democrat

Kevin E. Hayes  
Constitution

##### US House of Representatives District 3

(You may vote for ONE)

Daryl Farrow  
Democrat

Greg Murphy  
Republican

#### STATE OFFICES

##### NC Governor

(You may vote for ONE)

Al Pisano  
Constitution

Roy Cooper  
Democrat

Steven J. DiFiore  
Libertarian

Dan Forest  
Republican

##### NC Lieutenant Governor

(You may vote for ONE)

Mark Robinson  
Republican

Yvonne Lewis Holley  
Democrat

##### NC Attorney General

(You may vote for ONE)

Jim O'Neill  
Republican

Josh Stein  
Democrat

##### NC Auditor

(You may vote for ONE)

Anthony Wayne (Tony) Street  
Republican

Beth A. Wood  
Democrat

##### NC Commissioner of Agriculture

(You may vote for ONE)

Steve Troxler  
Republican

Jenna Wadsworth  
Democrat

##### NC Commissioner of Insurance

(You may vote for ONE)

Mike Causey  
Republican

Wayne Goodwin  
Democrat

##### NC Commissioner of Labor

(You may vote for ONE)

Josh Dobson  
Republican

Jessica Holmes  
Democrat

##### NC Secretary of State

(You may vote for ONE)

E.C. Sykes  
Republican

Elaine Marshall  
Democrat

##### NC Superintendent of Public Instruction

(You may vote for ONE)

Catherine Truitt  
Republican

Jen Mangrum  
Democrat

##### NC Treasurer

(You may vote for ONE)

Ronnie Chatterji  
Democrat

Dale R. Folwell  
Republican

##### NC Supreme Court Chief Justice - Seat 1

(You may vote for ONE)

Cheri Beasley  
Democrat

Paul Newby  
Republican

##### NC Supreme Court Associate Justice - Seat 2

(You may vote for ONE)

Phil Berger, Jr.  
Republican

Lucy Inman  
Democrat

##### NC Supreme Court Associate Justice - Seat 4

(You may vote for ONE)

Tamara Barringer  
Republican

Mark Davis  
Democrat

##### NC Court of Appeals Judge Seat 4

(You may vote for ONE)

Tricia Shields  
Democrat

April C. Wood  
Republican

##### NC Court of Appeals Judge Seat 5

(You may vote for ONE)

Lora Christine Cabbage  
Democrat

Fred Gore  
Republican

##### NC Court of Appeals Judge Seat 6

(You may vote for ONE)

Gray Styers  
Democrat

Chris Dillon  
Republican

##### NC Court of Appeals Judge Seat 7

(You may vote for ONE)

Reuben F. Young  
Democrat

Jeff Carpenter  
Republican

##### NC Court of Appeals Judge Seat 13

(You may vote for ONE)

Chris Brook  
Democrat

Jefferson G. Griffin  
Republican

##### NC State Senate District 6

(You may vote for ONE)

Ike Johnson  
Democrat

Michael A. Lazzara  
Republican

19

31081

Read Both Sides of the Ballot

Sample Ballot

Official Ballot

Onslow County, North Carolina

November 3, 2020

[Empty box for name or address]

Page 2 of 2

Precinct FS16\_-B0006

BALLOT MARKING INSTRUCTIONS

- A. Using the marking device provided or a black or blue ink pen, completely fill in the box to the left of each candidate or selection of your choice as shown.
- B. Where authorized, you may write in a candidate by filling in the box and writing the name on the Write-in line.
- C. If you tear, deface or wrongly mark this ballot, return it to request a replacement.



19

31081

NC House of Representatives District 15

(You may vote for ONE)

[ ] Phillip Shepard Republican

[ ] Carolyn F. Gomaa Democrat

DISTRICT OFFICES

NC District Court Judge District 4 - Seat 3

(You may vote for ONE)

[ ] Christopher J. Welch Republican

NC District Court Judge District 4 - Seat 4

(You may vote for ONE)

[ ] Michael C. Surlles Republican

NC District Court Judge District 4 - Seat 5

(You may vote for ONE)

[ ] Robert H. Gilmore Republican

[ ] Carol Jones Democrat

NC District Court Judge District 4 - Seat 6

(You may vote for ONE)

[ ] James L. (Jim) Moore, Jr. Republican

NC District Court Judge District 4 - Seat 7

(You may vote for ONE)

[ ] William Shanahan Republican

NC District Court Judge District 4 - Seat 8

(You may vote for ONE)

[ ] Billy Sutton Republican

NC District Court Judge District 4 - Seat 9

(You may vote for ONE)

[ ] James Walter Bateman III Republican

COUNTY OFFICES

Board of Commissioners

(You may vote for FIVE)

[ ] Velvet Scoggin Democrat

[ ] Walter J. Scott Republican

[ ] Aleccia Sutton Democrat

[ ] Royce Bennett Republican

[ ] Jack Bright Republican

[ ] Paul Buchanan Republican

[ ] Patty Diaz Democrat

[ ] Robin L. Knapp Republican

Board of Education

(You may vote for FOUR)

[ ] Melissa Oakley Republican

[ ] Ken Reddic Republican

[ ] Joseph Speranza Republican

[ ] Earl Taylor Unaffiliated

[ ] Pam Thomas Unaffiliated

[ ] Eric Whitfield Republican

[ ] Paul L. Wiggins Unaffiliated

[ ] Takenya Kaprice LaBriado Democrat

Register of Deeds

(You may vote for ONE)

[ ] Omega King Jarman Republican

NONPARTISAN OFFICES

Soil and Water Conservation District Supervisor

(You may vote for ONE)

[ ] S. Jerome Shaw

[ ]

Write-in:

END OF BALLOT

Read Both Sides of the Ballot